



AJ16

DENTAL UNIT





COMPANY PROFILE

AJAX was established in 2007, currently with 400 employees in the company, focusing on the research & development, manufacturing and sales of medium and high-end dental units. AJAX adopts "the pursuit of excellence in dental equipment" as the corporate philosophy, with independent R & D team and strong technical force, with efficient production line and strict quality control process, AJAX's production capacity has reached 15,000 units per year and has passed the U.S. FDA, Japan JIS and the European Union CE tests and other global quality certification; AJAX products are sold in the United States, Western Europe and other areas and regions, is providing services for dentists in more than 80 countries around the world, combined with the "rapid response, mission will be achieved" after-sales concept, it is to let doctors and distributors be no worries, AJAX has become a global choice that 100,000 + users trust.



RELIABLE QUALITY

90% of the dental chair parts are developed and produced by Ajax, with strict quality control of each process

CONTINUOUS INNOVATION

A strong R&D team of 60 people with the ability to innovate, keeping up with industry trends and insisting on independent research and development

QUICK RESPONSE

Listen carefully to the needs of each customer and improve products and services in time

QUALITY SERVICE

We offer 2 year warranty. Our professional technicians provides professional solutions for clinics and global service network delivers chair parts very fast.

AJ16 **SOLID | COMFORT | DURABLE**

The high-efficiency design of the AJ16 enables dental staff to efficiently complete various four-handed operations, thereby greatly improving work efficiency.



Heavy Duty Metal chair frame

180kg load bearing
No shaking during treatment



Cast Aluminum Butterfly Backrest

The height difference between the edge of the backrest and the center is as high as 8cm. The thickness of the edge of the seat cushion is only 2.5cm, which maximizes the leg space for dentists and assistants, and allows the dental team to be as close to the patient as possible.



60° horizontal rotation

PATIENT CHAIR



Pinching Style One-hand operating type headrest

Adjusting with one hand, positioned in one second



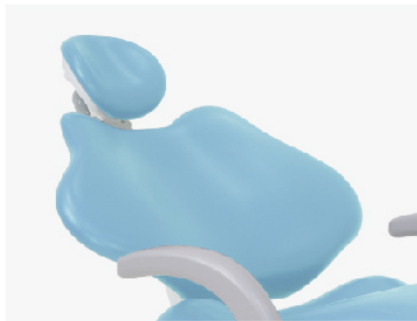
Armrest

Rotatable armrest, Easy for patients to get on and off the dental chair



Relaxis- Sewn Microfiber Leather Upholstery

Elegant appearance, Soft and comfortable



Seamless PU Upholstery (Optional)

Non-cracking & Anti-fading leather



Suitable For Any Height

The lowest chair position is 410mm and the highest chair position is 780mm. The application of ergonomic design makes the dental chair extremely harmonious with the human body, so that patients do not feel pushed or pulled during treatment.

Soft Start and Stop, Smooth Adjustment

Gentle and flexible start and stop, smooth adjustment; Ergonomic chair motion, no back-rubbing feeling; provides patients all-round comfort.

DENTIST UNIT



3 memory chair positions

With memory control system with three independent memory preset positions of P1, P2 and P3, one key to reach the preset working position, which can greatly improve the doctor's work efficiency.

High-quality materials

Corrosion-resistant, even sterilization on high frequency, it will not become yellow and brittle.



Continental Delivery System(Optional)

Omni-directional rod, Its flexibility extends the operating space.
0 gravity grip, No fatigue during continuous operation

ASSISTANT UNIT



Double Joint Assistant Unit

The double-joint assistant unit has a wider range of movement and greater flexibility to easily position the assistant unit where it needs to be.



Rotatable Doctor's Tray

The flexibility of the tray offers you larger operating space.



Effortless Take-and-Place Handpiece Placer

The handpiece holder for most appropriate position for dentist. Effortless take and place your handpieces



Strong Elastic Rod

Light as nothing, less fatigue from continuous operation



Ultra-light Handle

Ultra-light HVE and SE handle
Air tightness is increased by. Suction is stronger and more stable

WATER UNIT



One-click Water line Disinfection

With just one click, the comprehensive coverage waterline disinfection system fully covers three-way syringe, handpiece and mouthwash' s waterlines to prevent cross-infection and meet the infection control requirements for waterway pipeline disinfection of dental chairs.



Disinfection Rack



Made with High Quality Polymer Materials

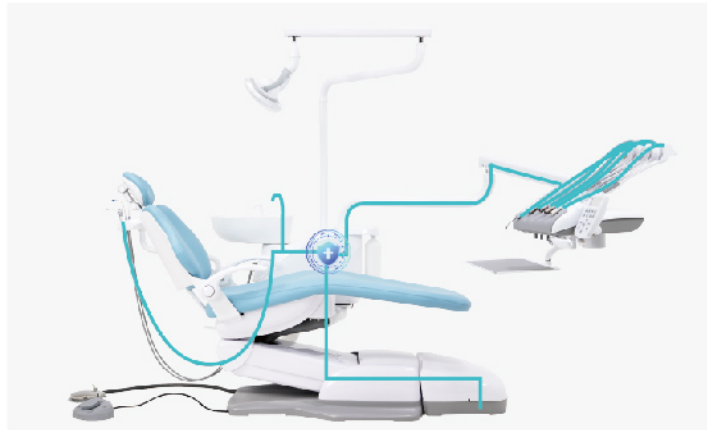
The side box that can be used for long-term

No fear of aging and brittleness



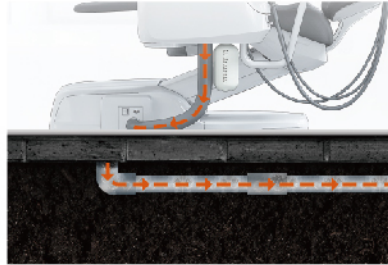
Double Water Bottle, 1.5L&1.3L Large Water Bottle

The bottle mouth adopts a thickened design, which is more durable; The large bottle mouth design is convenient for dentists to fill with purified water and disinfectant.



Full Coverage Waterline Disinfection System

Full coverage of doctor and assistant three-way syringe, handpiece tubes, cup water supply tubes.



Sealed drainage

The patented sealed sewage device eliminates the odor, sewage back-seepage, and bacterial infection in the consultation room from the source, creating a comfortable treatment environment.



Spin-in filter

Rotary locking and sealing structure, rotating and locking, easy to operate. The filter is installed on the outside of the box, which can be operated visually and is convenient for daily cleaning.



Rotatable Ceramic Cuspidor

High value drainage and faster drainage.



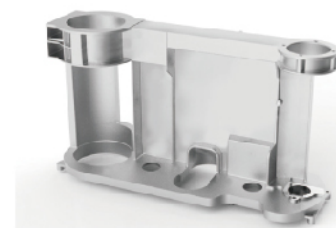
High-efficient Four-hand Operation

Full-featured doctor and assistant control panels, offering efficient four-handed operation of medical care; rotatable side box, giving more space for the assistant, easy to operate.



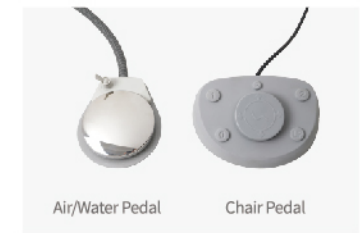
Rotatable Side Box

Rotatable side box can give the assistant more space for easy operation.



Cast Aluminum Frame

Light weight, rigid, stable.



Air/Water Pedal

Chair Pedal

Dual Foot Control

Lighter strength for step on. Dental chair lifting, backrest pitching, handpiece working status, with water/no water, blowing air, cuspidor flushing and water supply.

AMBER II LED DENTAL LIGHT

Stepless adjustment | Sensor control | Mixed light mode



Switch and brightness sensor adjustment, sensitive operation, sterile and safer



Mixed light mode, the brightness can be adjusted steplessly to create an ideal environment for treatment

White light mode, No cure mode and mixed light can be switched, and the suitable color temperature can be freely selected

High brightness and large spot | Six groups of high-quality lamp beads

The maximum illuminance is 40000 lux | Color temperature maximum value $\geq 5200\text{k}$, minimum value $\leq 3500\text{k}$;

DOCTOR STOOL



D3 Doctor Stool with 6 functions

Six adjusting functions; The caster frame is made of precision aluminum alloy casting, and the casters are made of silent wheels.



N4 Assistant Stool (Optional)



AJ16 Continental (Optional)

UPHOLSTERY COLOR CHART

SEAMLESS UPHOLSTERY

Seamless design, easy to clean. Non-cracking & Anti-fading leather



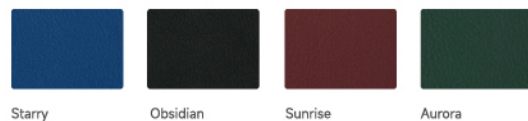
RELAXIS- MICROFIBER LEATHER UPHOLSTERY

With a special coating layer, it delivers the features of ageing resistance, fade resistance, smooth and delicate touch. Soft elasticity and powerful support for waist and neck.



NAPPA LEATHER

Fine texture, silky touch, elasticity, fresh and breathable, all-round to fit the body curve.



CONFIGURATION

Operating System	AJAX System
	(with 3 programmable positions)
	Safety Switch
	Soft Start and Stop
Infection Control	One Click Waterline Disinfection System
Dental Light	Amber II
Chair	Relaxis Micro Fiber Upholstery
	60° horizontal rotation
	swivel Armrest
	Casting Aluminium Chair Frame
Delivery System	silicone Anti-slippery Pad
	Built-in X-ray viewer
	Master Air/Power/ Water Switch
Assistant Unit	Double Joint
Side Box	Rotatable
	side Box 1300ml Disinfectant Bottle
	Side Box 1500ml Water Bottle
	ceramic cuspidor
	Hydrolytic Resistance Wwaterlines
Foot Control	Double Joint
Junction Box	Junction Box Built-in junction box with air/ water filters and reulators
	Sealed Drainage Device
Doctor Stool	D3 Dotor stool

OPTIONS

Libra LED Shadowless Lamp	Built-in Scaler
Mobile Cart	Built-in Curing Light
Continental Delivery System	Electric Motor Set
External Junction Box	Fiber Optic Set
Single Joint Monitor Bracket	Relaxis- Microfiber Leather Upholstery
Double Joint Monitor Bracket	N4 Assistant Stool
Intraoral Camera Set	



Guangzhou | Los Angeles
Melbourne | Milan

HEADQUARTER

Guangzhou Ajax Medical Equipment Co., Ltd.
Address: Building No.2, Dagang Industrial Zone, Shilou Town, Panyu District, Guangzhou, P.R.China

www.ajaxdent.com
info@ajaxdent.com
+86 020 84847938

+86 18926102494
Ajax Dental
Ajax Dental